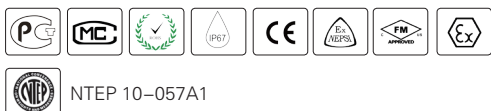


H9N



- Alloy steel IP67 dual shear beam load cell
- High accuracy
- Suitable for track and truck scales and other weighing devices



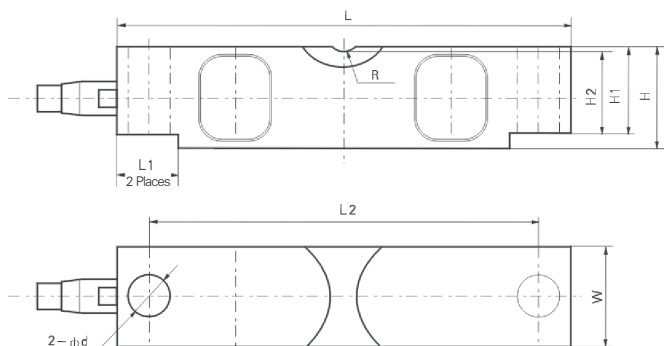
Available models

Capacity	Accuracy	Full article description
25 klb	D3	H9N-D3-25K-9B
40 Klb	D3	H9N-D3-40K-9B
50 Klb	D3	H9N-D3-50K-9B
60 Klb	D3	H9N-D3-60K-9B
75 Klb	D3	H9N-D3-75K-9B
100 Klb	D3	H9N-D3-100K-9B
125 Klb	D3	H9N-D3-125K-9B
150 Klb	D3	H9N-D3-150K-9B
200 Klb	D3	H9N-D3-200K-9B

Specification

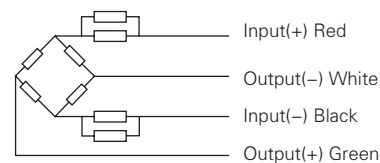
Accuracy class		D3
Output sensitivity (= FS)	mV/V	3.0 ± 0.003
Maximum capacity (E _{max})	klb	25, 40, 50, 60, 75, 100, 125, 150, 200
Maximum number of load cell intervals (nLC)		10000
Ratio of minimum LC verification interval $Y = E_{max} / v_{min}$		7500
Combined error	%FS	± 0.03
Safe overload	of E _{max}	150 %
Ultimate overload	of E _{max}	300 %
Zero balance	%FS	± 1.0
Excitation, recommended voltage	V	5 ~ 12(DC)
Excitation maximum	V	18(DC)
Input resistance	Ω	700 ± 7
Output resistance	Ω	703 ± 4
Insulation resistance	MΩ	≥ 5000 (50VDC)
Compensated temperature	°C	-10 ~ +40
Operating temperature	°C	-35 ~ +65
Element material		Alloy steel
Ingress protection (according to EN 60529)		IP67
ATEX classification (optional)		II1G Ex ia IIC T4 II1D Ex iaD 20 T73°C C II3G Ex nL IIC T4

Dimensions in mm



Dimension	L	L1	L2	H	H1	H2	Φd	W	R
Capacity									
25klb	197 (7.75)	35 (1.38)	165 (6.5)	49.3 (1.94)	43.2 (1.7)	41.4 (1.63)	Φ17.3 (0.68)	43 (1.7)	R19.1 (0.75)
40klb	260.4 (10.25)	49 (1.93)	216 (8.5)	62 (2.44)	53.3 (2.1)	50.8 (2.0)	Φ20.6 (0.81)	49.3 (1.9)	R25.4 (1.0)
50~75klb	260.4 (10.25)	49 (1.93)	216 (8.5)	74.7 (2.94)	67.3 (2.65)	64.5 (2.54)	Φ26.9 (1.06)	62 (2.44)	R25.4 (1.0)
100~125klb	387.4 (15.25)	79.5 (3.13)	324 (12.76)	98 (3.86)	87.1 (3.43)	83.8 (3.3)	Φ41.2 (1.62)	73.7 (2.9)	R38.1 (1.5)
150~200klb	489 (19.25)	127.8 (5.03)	387.4 (15.25)	147.3 (5.8)	130.1 (5.12)	112.8 (4.44)	Φ41.2 (1.62)	96.5 (3.8)	R50.8 (2.0)

Wiring



- Shielded, 4 conductor cable.
- Standard cable length: 9m
- Cable type and length for customer's own application are available on request.
- Shield connected to body.